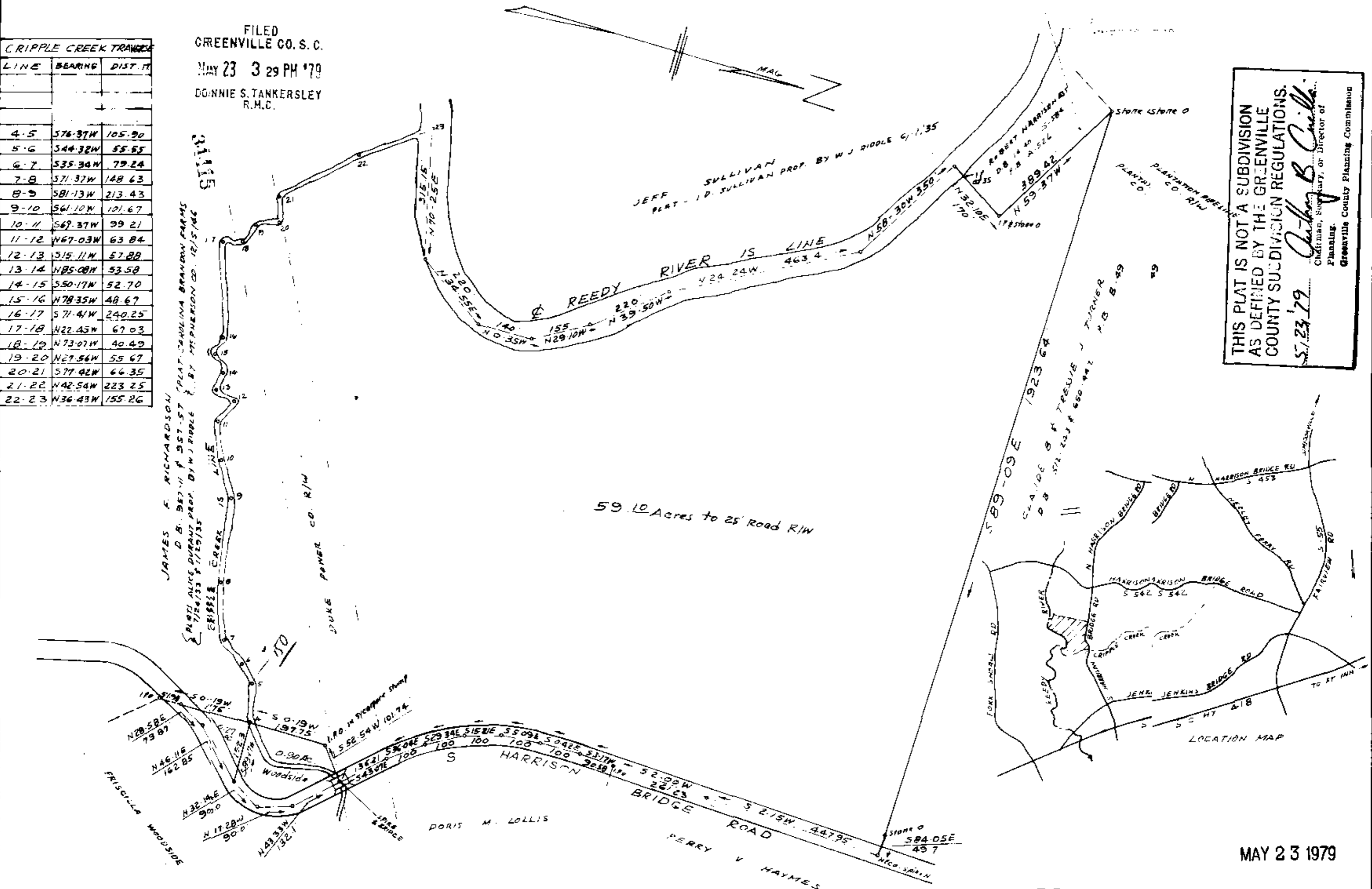


CRIPPLE CREEK TRAVEL

LINE	BEARING	DIST. FT.
4-5	S76.37W	105.90
5-6	S44.32W	55.55
6-7	S35.34W	79.24
7-8	S71.37W	148.63
8-9	S81.13W	213.43
9-10	S61.10W	101.67
10-11	S69.37W	99.21
11-12	N67.03W	63.84
12-13	S15.11W	57.88
13-14	N85.08W	53.58
14-15	S50.17W	52.70
15-16	N78.35W	48.67
16-17	S71.41W	240.25
17-18	N22.45W	67.03
18-19	N73.07W	40.49
19-20	N27.56W	55.67
20-21	S77.42W	66.35
21-22	N42.54W	223.25
22-23	N36.43W	155.26

FILED  
GREENVILLE CO. S. C.  
MAY 23 3 29 PM '79  
DONNIE S. TANKERSLEY  
R.M.C.



THIS PLAT IS NOT A SUBDIVISION  
AS DEFINED BY THE GREENVILLE  
COUNTY SUBDIVISION REGULATIONS.  
5/23/79 *Anthony B. Caille*  
Chairman, Secretary, or Director of  
Planning  
Greenville County Planning Commission

NOTE: RIVER LINE TAKEN FROM PLAT OF ALICE DURANT PROPERTY BY W. J. RIDDLE JULY 28, 1935 AND AERIAL PHOTO AND NOT SURVEYED.

17A-77



PROPERTY OF  
PRISCILLA ANANN WOODSIDE  
GREENVILLE COUNTY S. C.

SCALE 1" = 200'  
MAR 28, 1979  
L. L. LECTER - 2 W 23 74 23 79 | 9611 2.000

MICROFILMED